

PiCOEXPLORER PAS-110-YU

Protein Quantification with PiCOEXPLORER (Bradford assay)

Overview

Calibration curves are generated using PiCOEXPLORER and NanoDrop1000 (Thermo Scientific).

Reagent

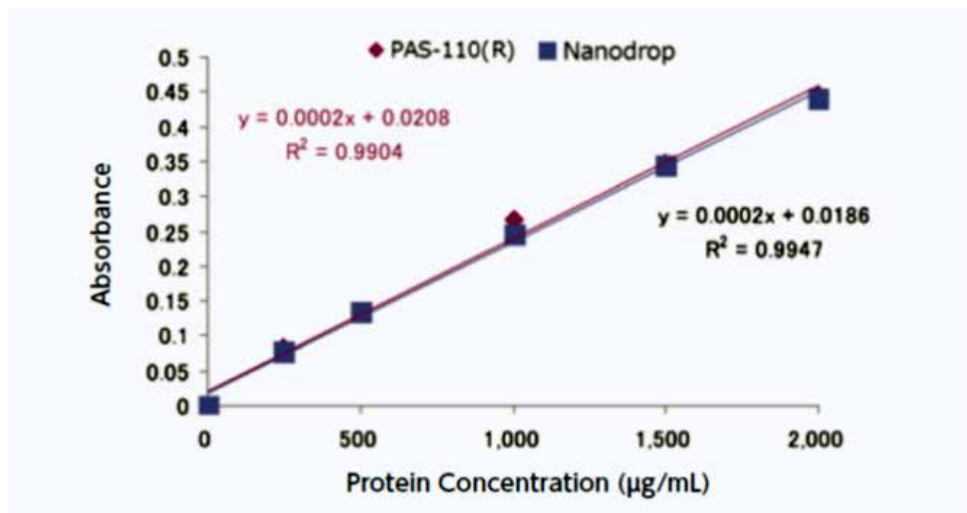
Pierce™ Coomassie Plus (Bradford Protein) Assay Kit Thermo Fisher Scientific

Procedure

- 1) Dispense 50 µL of test sample solution into a 0.2-mL PCR tube
- 2) Add 150 µL of Bradford reagent to the test sample solution
- 3) Incubate for 15 min at room temperature
- 4) Quantify the protein content in the sample by using PAS-110 (R) and NanoDrop1000 to generate calibration curves.

*Wavelength range (Color sensor R) : 575-660 nm

Calibration Curves



Result

PiCOEXPLORER is applicable to the Bradford assay

Measurement Partner

Biochemistry Process Study Group, Advanced Manufacturing Research Institute, National Institute of Advanced Industrial Science and Technology

Features of PiCOEXPLORER

- Boost Lab Productivity. Absorbance measurement with PiCOEXPLORER. Wavelength range: 400 - 660 nm
- Your portable, personal tool for Lab work and Field work. Analyze directly in unopened PCR tube (0.2 ml). No sample loss, easy to dispose.
- Free app for quick results and calibration curves on your smartphone, tablets. Save raw data (absorbance, concentration, intensity) in Excel file on your PC.

